



The Pollinator Port Project

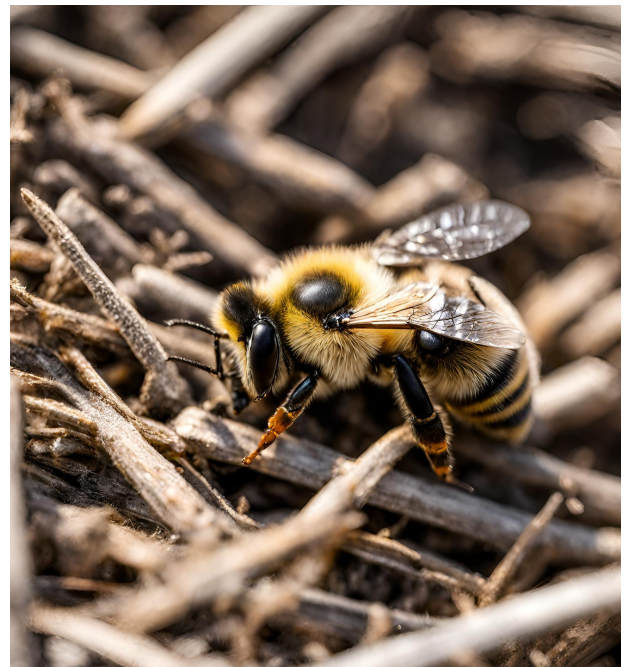
We are working to create more habitats for native bees in and around NYC.

In partnership with Rutgers University and the NYC Department of Transportation, The Hort is embarking on a project to design and install bee habitats in public plazas and Open Streets throughout New York City.

By installing two types of special habitats, Bee Bunkers and Bee Hotels, and planting native flowers in public spaces throughout the city, we will bridge the gaps between green spaces and promote native bee populations.

Did you know not all bees live in hives?

The majority of bees build their nests in underground cavities or plant stems.



The Pollinator Port Project

Bee Bunkers

Bee Bunkers provide protected soil into which female bees build their nests and lay their eggs. Over the winter, the developing larvae are kept safe and cozy until they are ready to emerge in Spring.



Bee Hotels

Bee Hotels look similar to birdhouses filled with reeds and tubes that serve as 'rooms' for solitary bees to nest their larvae and occasionally rest. Female bees deposit their eggs at the end of Summer and provide them with food so the developing baby bees can safely grow.

NYC and Beyond

In addition to installing these habitats in Open Streets and plazas around the city, our goal is to raise awareness about native bees to inspire other groups to build and implement their own bee bunkers and hotels.

Once we have successfully established the bee bunkers and hotels in NYC, we will help rollout the project in other major cities by putting together a toolkit, webinars, and outreach materials.